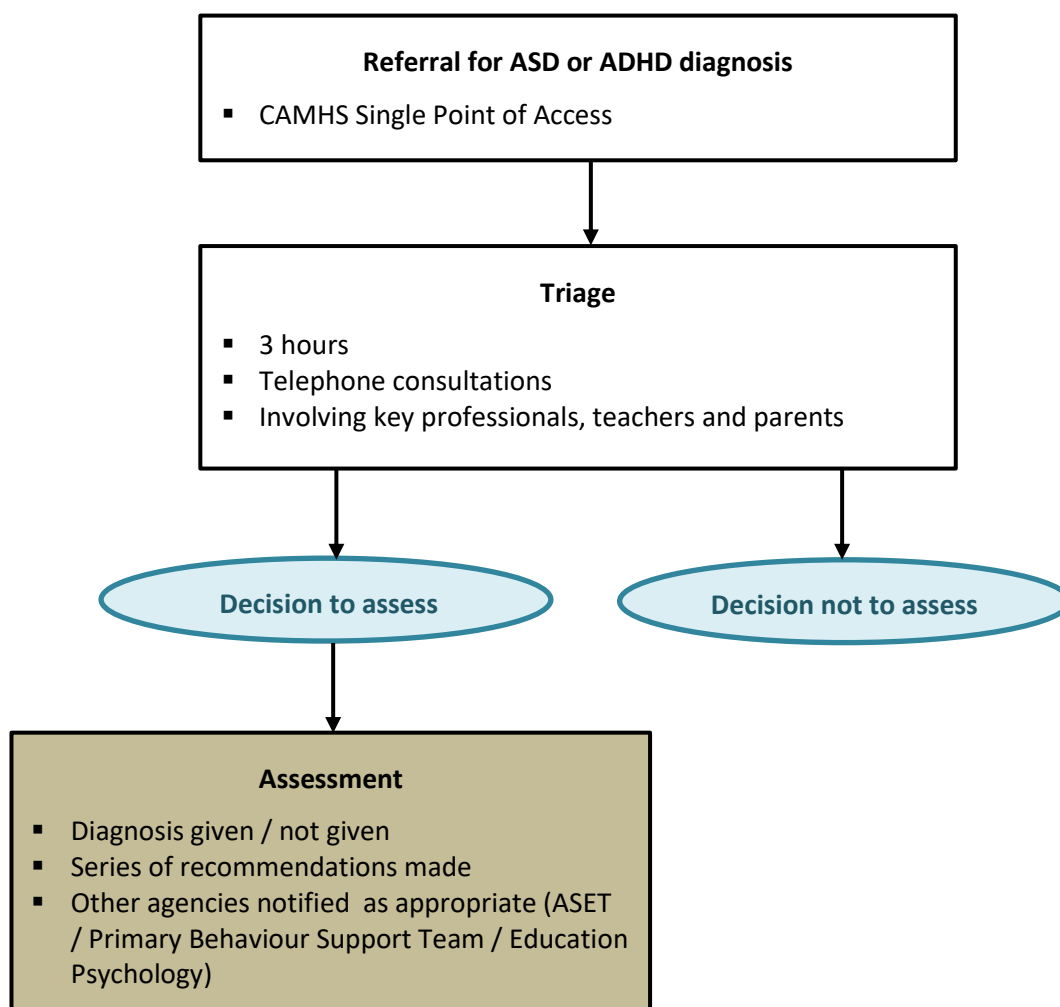


[North Lincolnshire Clinical Commissioning Group](#) (CCG), [Child and Adolescent Mental Health Services](#) (CAMHS), North Lincolnshire Local Authority and [HealthWatch](#) have developed a multi-agency pathway for diagnosing Autism Spectrum Disorder (ASD) and Attention Deficit Hyperactivity Disorder (ADHD). There is:

- A 'Neurodiversity Team', offering a single point of access for all referrals relating to requests for ASD and / or ADHD diagnosis. The Team comprises of members from [CAMHS](#), [Education Psychology](#), [ASET team](#) and [Primary Behavioural Support Services](#)
- A focus on the support that can be given by nurseries, schools, and colleges at the earliest possible stage so that 'needs led' interventions are put in place, based on presenting needs, regardless of diagnosis.

The current pathway is summarised in the diagram below (Figure 1)



## New Model (Figure 2)

The new pathway is shown in the diagram below:

